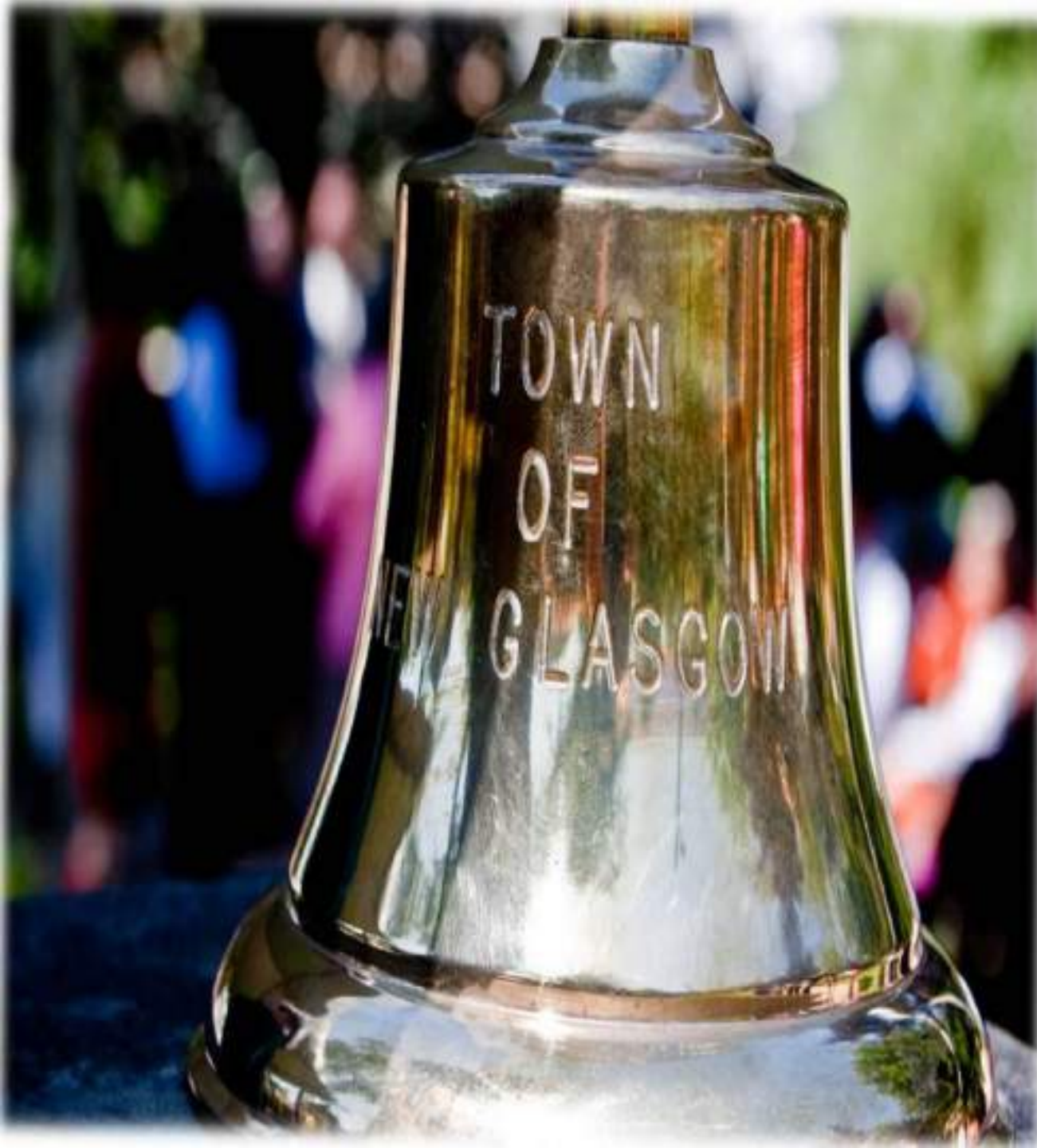


Town of New Glasgow

A scenic view of a bridge over a river in New Glasgow. The bridge has a green roof and a decorative archway with a sunburst design. The river is calm, reflecting the bridge and the surrounding greenery. The sky is clear and blue.

Rohan Mishra – Environment & Sustainability Lead



AGENDA

- Introduction
- The importance of Municipal Governments in addressing climate change
- New Glasgow's Emissions & Emission Reduction Targets
- Town of New Glasgow's Climate Action Plans
- The role of Community Engagement





INTRODUCTION

- The Town of New Glasgow, much like most of the Province of Nova Scotia is on lands that are by law the unceded territories of the Wabanaki peoples – predominantly the land of the Mi'kmaq.
- The Town of New Glasgow is situated on the banks of the scenic East River of Pictou with a population of just under 10,000 residents located on the North Shore and acts as the urban center to Pictou County.
- We are the 4th largest urban center in the Province.
- The Town of New Glasgow is committed to ambitious climate action and is a member of the Global Covenant of Mayors for Climate & Energy and the Federation of Canadian Municipalities – Partners for Climate protection (PCP) Program.

- On March 1, 2022, Town Council declared a Climate Emergency joining over 500 municipalities across the country and becoming the 8th Municipality in Nova Scotia to do so.
- The Town of New Glasgow is also a participating municipality in the Circular Cities and Regions Initiative (CCRI)



FCM

FEDERATION
OF CANADIAN
MUNICIPALITIES



GLOBAL COVENANT
of MAYORS for
CLIMATE & ENERGY



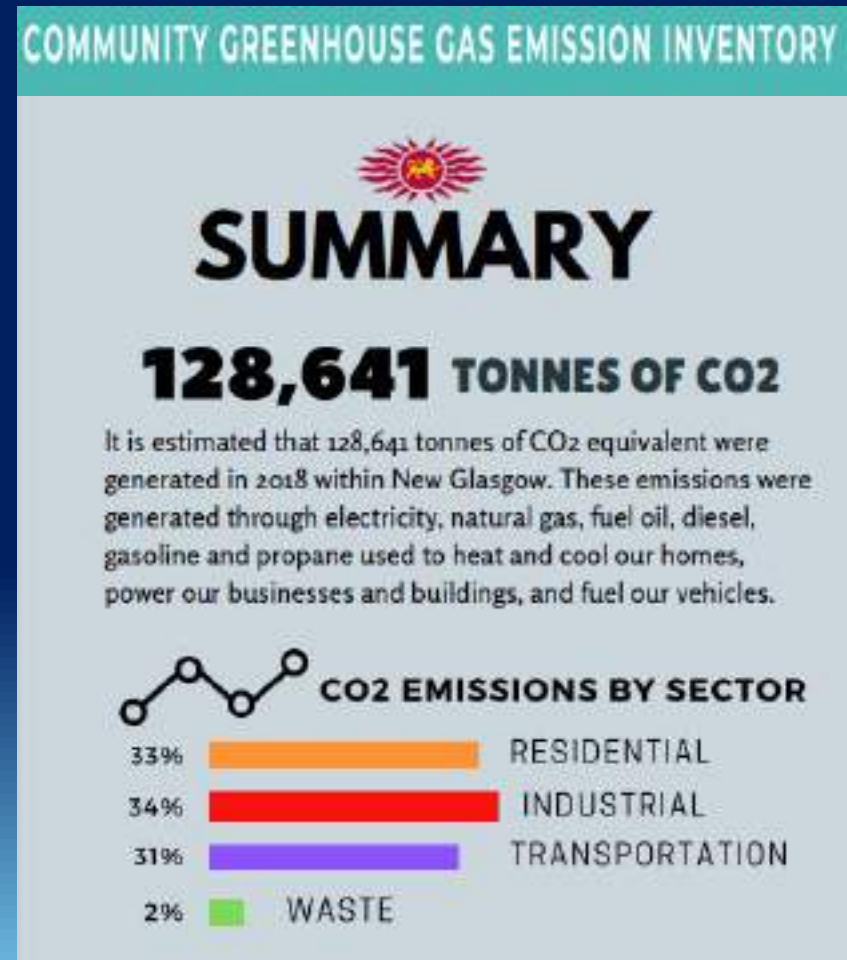
Local Governments
for Sustainability



The Importance of Municipal Governments in Addressing Climate Change

- Municipalities and Municipal Governments are at the forefront of climate change.
- Municipalities directly and indirectly account for nearly half of Greenhouse Gas emissions in Canada.
- Currently more than 4 billion people – or more than half of the world live in urban areas.
- This number is projected to increase in the future, further underscoring the importance of municipalities in addressing climate change.

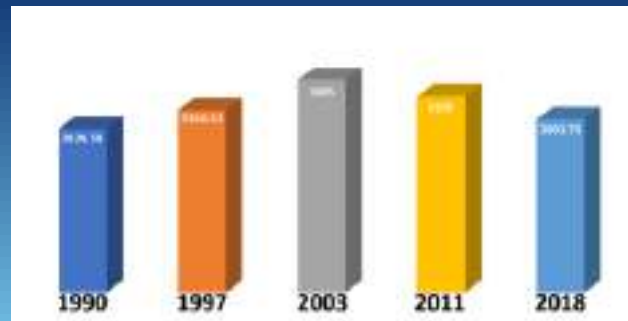




CO₂

3003.76

tonnes of CO₂



New Glasgow's Emissions

New Glasgow's Corporate Emission Reduction Targets

Corporate Target
2018 BASELINE
3003.76 tCO₂e

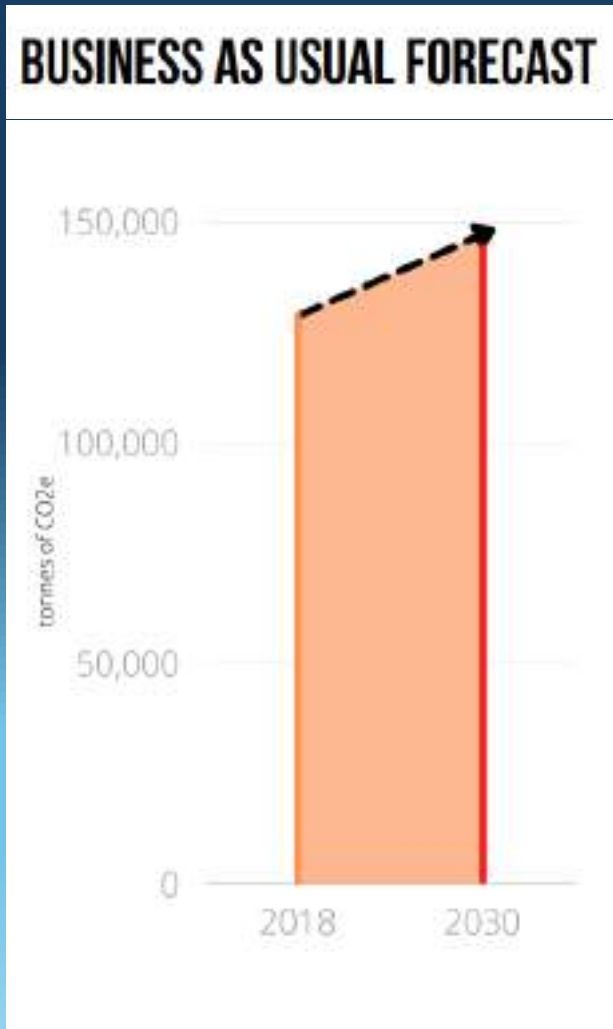


15%
2025 TARGET
2553.2 tCO₂e



30%
2030 TARGET
2102.632tCO₂e

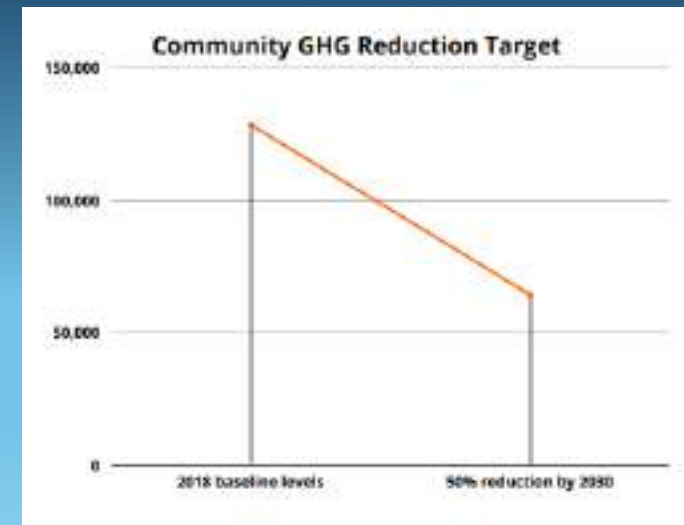
New Glasgow's Community Emission Reduction Targets

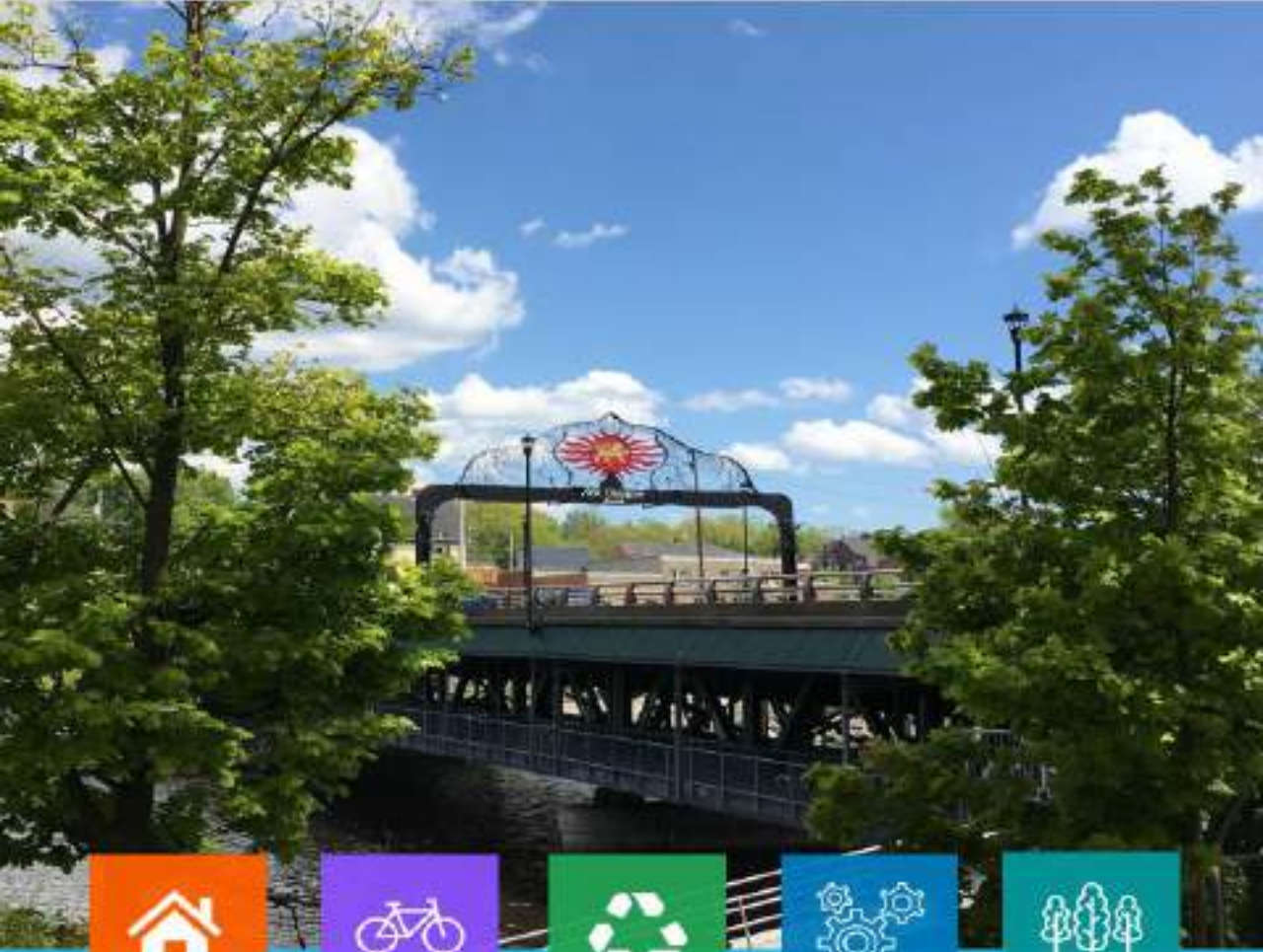


128,641 TONNES OF CO2

COMMUNITY TARGET

50% REDUCTION BY 2030





Community Climate Action Plan &
Greenhouse Gas Emissions Reduction Target
2022-2030

Town of New Glasgow



Corporate Climate Action Plan &
Greenhouse Gas Emissions Reduction Target
2020-2025

Town of New Glasgow



Waste



- Why is waste the smallest contributing sector to New Glasgow's Emissions and should we bother to address waste if it only accounts for roughly 2% of our emissions?
- YES!!

• Corporate Climate Action Plan

- Establish Waste Guidelines
- Develop and Implement Sustainability Policies (Single Use Item & Construction Waste)
- Corporate Waste Audit
- Waste Diversion Strategy and Target

• Community Climate Action Plan

- Single use items
- Industrial, Commercial & Institutional Waste
- Extended Producer Responsibility
- Circular Economy
- Low Emission Waste Collection
- Education & Community Engagement



Buildings

The Built Environment contributes the most GHG emissions in the Town of New Glasgow.



Corporate Climate Action Plan

- Deep Energy Retrofits
- Renewable Energy Generation
- Transportation Department Building Renovation or Relocation Plan



Community Climate Action Plan

- Residential Property Assessed Clean Energy (PACE) Program
- Commercial PACE Program
- Eco-Homes New Glasgow
- District Energy System

Fleet

- Corporate Climate Action Plan
- Fuel Efficient Driver Training
- Fleet Management Strategy
- Fleet Conversion
- Policy Development (Travel Guidelines, Vehicle Sizing Procurement and Anti Idling Policy)
- Community Climate Action Plan
- Zero Emission Transport
- Anti Idling Bylaw
- Active Transportation
- Public Transit
- Car Sharing
- Electric School Bus Fleet



Other Headings in our Climate Action Plans

- Corporate Climate Action Plan
- Streetlight and Traffic Signal
- Water & Wastewater
- Organizational & Institutional Policy Change
- Asset Management
- Community Climate Action Plan
- Policy, Planning and Procedures
- Adaptation and Resilience



Community Engagement





Thank You For Listening!



NetZero
NEW GLASGOW